



Cook Plaza, The New Homeless Center In Rockwood

Adjacent To 70 Unit Family Housing

By Janet Unruh, Wilkes East Neighbor

I have a generally positive view of humanity, and I think that every person has something to offer. But we have a homeless problem in the U.S. and the Portland metro area specifically, that is getting worse as time goes by. Enter JOHS, Joint Office of Homeless Services[1].



Gresham's Homeless

Gresham doesn't have a big homeless problem, according to JOHS. As of January 2022, there were 48 unsheltered individuals (according to the point-in-time street count). In January 2023, there were 33 unsheltered individuals, a decrease in the numbers[2]. This is a good trend, though I couldn't find updated data as of January 2024.

The City of Gresham has a Homeless Services department whose employees go out and contact the homeless directly and offer immediate help. This includes rent assistance, which is funded by JOHS. As of May 2024, JOHS provided permanent housing to 84 households, over 170 people, including children in Gresham. For 2025, the funding for housing and staff have been doubled[3].

Plans For Cook Plaza

Things may change because of the plans for Cook Plaza (a.k.a. East County Homelessness Resource Center), at 19421 SE Stark St, Gresham, OR 97233. The plans are full steam ahead for Cook Plaza to become a JOHS site intentionally located in Gresham (they said) to provide a day-use center, and 28 shelter pods (8'x8' tiny houses) for temporary housing of up to 42 individuals.

The budget is \$8,360,000[4][5]. The plans state that the day-use center will provide case management, housing referral, food, beverages, snacks, a kitchen to prepare

meals, showers, laundry service, storage lockers, and more, to be determined. Staffing ratios will be at least one staff person per 25 guests. The center's staff will not administer sobriety tests, but will expect good behavior. All staff will be trained in de-escalation, and mental health "first aid[6]." Currently, no more details about services are available. For information about a well-managed day center and the services they offer, see Rose Haven in End Notes[7].

Engagement With The Community

Kris Freiermuth, WENA president and I attended the public meeting at Cook Plaza on September 23, 2024, and were greeted by several local residents who were protesting outside the building. They shouted at us and carried signs exclaiming their displeasure about the new homeless center. Inside, several residents raised their objections at the end of the presentations.

The JOHS representatives assured them that they will be included in discussions – later. Residents said they had not been included in the decision to locate the center at Cook Plaza, and would have rejected the idea. JOHS representatives barreled ahead and promised that they would invite the residents to participate in the Good Neighbor Agreement process.

HOMELESS (Page 4)

City of Gresham Tree Trimming Guidelines

Property owners are responsible for the care and maintenance of street trees located in the public right-of-way next to their properties.

Basic Guidelines. Trees and shrubs must be at least 8 feet above the sidewalk, and 12 feet above the street. Vegetation must not block views for at least 150 feet from stop signs and other signage. Vegetation cannot grow or hang into the sidewalk or street.

Why do I need to trim my trees? Pedestrian and vehicle safety: Overhanging trees and vegetation can block views of stop signs, oncoming traffic, and street signs. Bikers and pedestrians can get hit by low hanging branches.

Don't Block Sidewalks. Vegetation cannot grow into the sidewalk or street.

If vegetation is blocking the sidewalk, it must be trimmed back flush with the edge of the sidewalk and curb.

For more information. Visit greshamoregon.gov, search 'Tree Trimming Guidelines'. Or contact Code Compliance 503-618-2248.

Se Habla Español



INSIDE THIS ISSUE

- Cook Plaza Homeless Center
- Wilkes East Land Use Update
- SnowCap Community Charities
- Upriver Village, Age-In-Place
- WENA Board Elections Nov 18th



Wilkes East Land-Use Update

By Greg Hartung, Board Member, Land-use Co-Chair

Hello members of our Wilkes East Neighborhood Association.

The Wilkes East Neighborhood Association board regularly receives land use plans from the City of Gresham to notify us of land use projects within or proximity to the Wilkes East neighborhood boundaries.

To view these Land Use issue in detail visit www.wilkeseastna.org/node/3728

Pre-application PRE-24-00239 16651 NE WASCO ST PORTLAND, OR 97230 Application date 4/19/2024: Proposed standard partition for the creation of (2) parent parcels, one of which is proposed as a flag lot. They are each proposed to contain a quadplex, a permitted housing type in this zone. Current zoning Residential 7 LDR7. Once finalized a MHLD (Middle Housing Land Division) will be applied for. Demolition permit **DEMO-24-00044** was issued on 02/12/2024 to remove a single-family home and wooden shed from the property.

LAND-USE (Page 2)

Did You Know? No number before 1,000 contains the letter A.

Mark Your Calendar!
Wilkes East Neighborhood

Fall 2024 Meeting
November 18th • 7PM

Moose Lodge • 16411 NE Halsey

Wilkes East Neighborhood Association Newsletter

Published three times a year. Over 1500 copies distributed throughout Wilkes East.

The Wilkes East Neighborhood Association (WENA) is a non-profit organization in Gresham, Oregon. Deadline for submission is the 10th of the month prior to publication. WENA reserves all rights, and all copy may be edited for clarity and length. Download a PDF of this newsletter online at: wilkeeastna.org/newsletter.htm.

BOARD MEMBERS

- Chair** **Kris Freiermuth**
chair@wilkeeastna.org
- Vice Chair** **(Vacant)**
vicechair@wilkeeastna.org
- Secretary**..... **Gail Voge**
secretary@wilkeeastna.org
- Treasurer** **Billy Simmons**
treasurer@wilkeeastna.org
- Land Use** **Greg Hartung**
Kris Freiermuth
landuse@wilkeeastna.org
- At-Large**..... **Robyn El Kay**
Eric El Kay
member2@wilkeeastna.org
Bob Lundborn
webmaster@wilkeeastna.org

BOARD MEETINGS

Meetings are held on the second Monday of each month at 6:30PM. See wilkeeastna.org for details.

CONTACT US

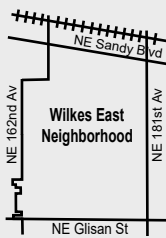
Email: info@wilkeeastna.org.
Postal Mail: 17104 NE Oregon, Portland OR 97230

VOLUNTEER OPPORTUNITIES

Get involved. Let us know how you'd like to help. Email info@wilkeeastna.org for details.

SPECIAL THANKS

- The newsletter is funded in part through a generous grant from the City of Gresham.
- Printing by Hush Ink / Print Results. 971-279-4960



Dear Neighbors • a message from your WENA President

Yesterday I was looking out of my kitchen window and noticed the gold, black, orange & silver of the leaves on the trees. It was gorgeous! Then suddenly a breeze came up and leaves came down like raindrops. It then started to sprinkle with sun shining through. It was really beautiful. Mother Nature at her best! I had forgotten how much I love Fall!

Our last meeting of this year is fast approaching for Wilkes East Neighborhood; Monday, November 18, 2024 7PM at the Moose Lodge, 16411 NE Halsey. We have some interesting topics to cover along with the election of officers for our Board. Billy Simmons, our Treasurer of 17 years, is leaving to enjoy his retirement with his wife Laurie and grandchildren. We thank him for the great job he has done during his tenure. Billy will continue to deliver newsletters.

Please visit our website wilkeeastna.org for the November 2024 meeting announcement and agenda link where you'll find the bios from two neighbors who have expressed an interest in joining the board: Claudette Naylor, from Cypress Park, will run for the Treasurer's position; Janet Unruh,

from Capri Terrace, will run for a Member-at-Large position. Join your neighborhood Board. All positions up for election. To join the Board, simply show up and nominate yourself! Get involved. Make a difference!

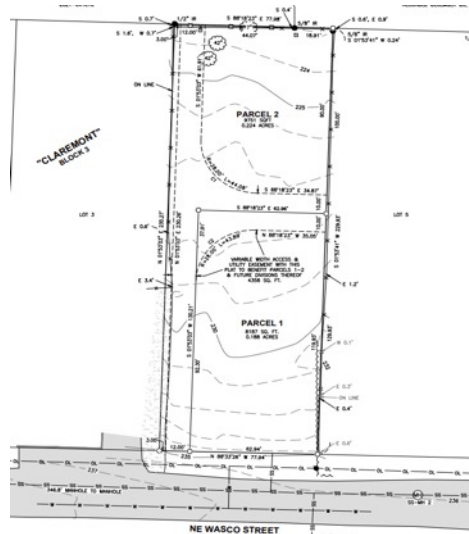
Please mark your calendar for the following Board and General meetings. Board meetings are held via Zoom on the 2nd Monday of each month, excluding December. All neighbors are welcome to attend Board meetings. Feel free to contact any board member or visit our website wilkeeastna.org for the Zoom meeting link if you'd like to join us. Our General Meetings are the 2nd Monday of March, August, and November. We would like very much to see or hear from you!

I look forward to seeing you at our Fall meeting November 18th 7PM at the Moose Lodge! We apologize for the date change of this meeting due to Veterans Day falling on the 2nd Monday of November this year.

Your Neighbor & Friend,

Kristen Freiermuth

LAND USE (Page 1)



Proposed lot partition for 16651 NE WASCO ST



Architect rendering Habitat for Humanity, 176th & Glisan

There will be several mature trees in the rear of the property that will be preserved as part of the open space. Street side improvement will include landscaping. Watch for street side improvements and heavy construction equipment.

For these and other public records, visit <https://gresham-or-energyweb.tylerhost.net>. You do not need to create or register an account to access project files. To search for project files and public records: Click on the search icon. In the screen that loads, type in the Plan case number in the search field and click on the search button. The page will reload with the results of the search, including highlighted direct links to cases. Click on the highlighted link for the Plan case. In the page that loads, click on the Attachments tab to view project files.

You can also view detailed instructions on how to search for public records. Website: <https://greshamoregon.gov/workarea/DownloadAsset.aspx?id=13448>

If you have any questions about accessing the files online or any projects, please contact PlanningTech@GreshamOregon.gov ■

Design review DR 23-00425 NE Glisan Habitat for Humanity project. Location 17640 NE Glisan Portland, Or 97230 (across from Nadaka Nature Park). This is a development of 20 two-story dwelling units arranged in 10 duplex buildings with 28 parking spaces, landscape and open spaces. Lot consolidation of 17616 and 17636 NE Glisan was required to form one lot of 17640 NE Glisan. Total land size is 1.41 acre. Tree removal and land clearing has begun.

info@rideconnection.org



503.226.0700

Providing responsive, accessible transportation at no cost for seniors and people with disabilities
www.rideconnection.org

Increased Need at SnowCap

By Nate Larsen
SnowCap Volunteer Coordinator

SnowCap Community Charities is a philanthropic organization created to provide food, clothing, advocacy and other services to our neighbors in need. Located off 178th and Stark street in the Rockwood area, SnowCap has been providing essentials to people that live East of 82nd, but still within Multnomah County, since 1967.

Over this past summer, SnowCap has been serving an average of 12,600 people per month, nearly 3,000 more than last year. And the sustained increase in the number of neighbors we are serving shows no signs of slowing down.

SnowCap is primarily known for our food pantry. Families and individuals who live in our area can come to SnowCap up to two times each month for free groceries, pet food and hygiene items.

SnowCap accepts donations of just about any kind of non-perishable food, provided it is still in the original, factory packaging. We can also accept donations of fresh fruits and vegetables from gardens and orchards! Some of the most requested items from our clients, are things like soups, stews, chilis and other canned proteins (peanut butter, SPAM, tuna, etc.).

SnowCap also operates an offsite clothing closet, where our clients can make appointments once each month, to select donated clothing to help keep their families warm. To facilitate this, SnowCap accepts donations of any kind of gently used clothing - any size, any shape or any style! Shirts, pants, sweatshirts, jackets, shoes, and even sheets or towels make wonderful donations. We also accept brand new packages of socks and underwear.

But one of the best ways to help, is by volunteering your time! SnowCap is always on the lookout for folks to help assemble food boxes/bags in our warehouse, assist clients as a personal shopper in our offsite clothing closet, or even help answer phones as a receptionist! With a small staff of only 12 people, we literally cannot do what we do, without the help of our wonderful volunteers!

SnowCap's pantry is open every Monday through Friday from 10am to 2pm, and Monday and Wednesday evenings from 6pm to 8pm. If you are interested in volunteering as an individual or group, please contact nate@snowcap.org, or visit www.snowcap.org for more information. ■

Follow-Up to Our August 12th Summer Meeting

The following two stories in Willamette Week provide greater insight into a topic of discussion at our August 2024 General Meeting by the guest speakers from the Wilkes Community Group, located on the west side of NE 162nd Ave.

City of Portland Inspectors Find Fault With Wicare Group Home in the Wilkes Community Group Neighborhood:

<https://www.wweek.com/news/2024/09/04/city-inspectors-find-fault-with-a-group-home-we-featured-last-month/>

And here's the story that brought the issue to light:

<https://www.wweek.com/news/2024/08/07/an-out-of-state-investor-bought-an-east-portland-home-then-a-dozen-struggling-people-moved-in/>

We're glad the Wilkes Community Group neighbors finally got action on this very troubling situation. ■

A Note From Wilkes Elementary

Names on Clothing. Please be sure to write your child's name on their jackets and outer clothing. When they run around outside during recess, they get warm and take their jackets off. We have a large collection of lost and found clothing already this year. Putting names on clothing helps to find the owner and helps your child not to lose their clothing and coats. ■

wilkeseastna.org

Village Movement Coming to Gresham!

By Jane Foreman
Chair, Steering Council
UpRiver Village

A new Village is forming in the Gresham-Troutdale area to provide older adults with a way to comfortably age-in-place. UpRiver Village isn't a real estate development or a retirement community. Instead, members live in their own homes; they can be homeowners, renters, in shared housing, or living with relatives. UpRiver Village will join Villages NW, a 501(c)3 not-for-profit organization with 13 existing and developing Villages in NW Oregon and SW Washington. The Village Movement embraces the strategy of bringing services to people rather than moving people to services. UpRiver Village will serve seniors within the city limits of Gresham, Troutdale, Fairview and Wood Village.

Steering Council Chair Jane Foreman was a volunteer with and member of Eastside Village for two years before moving to Gresham in December where there is no Village. So she set about creating one with support from Villages NW mentors. A core group of committed volunteers meets monthly to work on organizational development. When the development phase is complete, UpRiver Village will open for membership and start scheduling services.

UpRiver Village is building the foundation to provide practical services to members as well as opportunities for socializing. Volunteers will provide services such as transportation to appointments and shopping, occasional assistance with housekeeping and yard work, and help with technology. Social and recreational activities will include opportunities to meet like-minded seniors for coffees, book groups, potlucks, group walks, and more. Please see information on upcoming events at www.uprivervillage.org. Most events are open to the public at this time.

UpRiver Village currently needs volunteers to help with organizational development, infrastructure creation, communication, outreach and marketing. After UpRiver Village opens, volunteers will be needed for direct services to senior members.

The first Village in the United States - [Beacon Hill Village](#) - started in Boston 25 years ago. UpRiver Village will also be a member of the national [Village to Village Network](#) that includes more than 500 existing and developing Villages nationwide.

For more information about UpRiver Village please visit www.uprivervillage.org, email contact@uprivervillage.org, or phone 503-489-8813 ■



ParentSquare

ParentSquare

Reynolds School District uses ParentSquare for school communication, primarily with email, text, and app notifications. ParentSquare automatically generates an account for each parent, using their preferred email address and phone number that was entered at registration. Be sure to download the mobile app so that you can receive important messages.



Download the ParentSquare mobile app

Send & receive school communications on the go.



Start a **Neighborhood Watch** in your area.

Visit greshamoregon.gov/Neighborhood-Ready

Invite your neighbors to attend a meeting and fill out copies of the [Neighborhood Ready workbook](#)

HOMELESS (Page 1)

- Through the Good Neighbor Agreement process, JOHS will work together with the service provider, the City of Gresham, and the local community to co-develop robust safety protocols, including 24-hour supervision and clear communication channels for neighbors to ensure that programming operates in harmony with the surrounding community. The safety of everyone in the community is of paramount importance to JOHS[8].

The Good Neighbor Agreement process will begin in early 2025[9]. See a template for a Good Neighbor Agreement[10]. JOHS also assured meeting attendees that they would be canvassing households and businesses within a radius of one-fourth mile of the site to reach those who may be impacted[11].

During the meeting, JOHS representatives deflected practical and security-related questions, saying that the service provider would be responsible for all those sorts of things.

- The process for selecting the service provider has started and will be completed in the coming months. Once selected, the provider will be introduced to the community in a public community engagement event. The service provider will also be a partner in the Good Neighbor Agreement process beginning early next year[12].

The Problems

The day-use center seems more problematic than the pod village, because homeless people will come there during the day and leave when it closes. There aren't any plans as to where they could go after that. "The services planned...are designed to support unhoused individuals...onsite, in the confines of the facility[13]." The service provider will be responsible for policing the perimeter and forbidding people to set up camp on the sidewalks or in the parking lot. If security issues become too great, JOHS will hire security guards[14].

Because Gresham itself doesn't have a large homeless population, homeless people may come from some distance to the day center. They would probably want to stay nearby, instead of returning to wherever they came from. They could begin pitching tents on the Gresham-Fairview Trail, which is 2.5 blocks away; or the power line strip, which is 4.5 blocks away. There are other potential camp sites nearby. This would create a new burden for Gresham Police and Homeless Services.

Across the street from Cook Plaza is the Kaiser Permanente medical center with parking lots and spacious lawns, which are open invitations to the homeless. The medical center will probably have to install fencing and possibly close the entrance (there's another entrance on E. Burnside).

Homeless people with vehicles and service providers will park in a parking lot beside the building on the east side. The parking lot is the only access to several apartment buildings next door to the north, and cannot be walled off. Residents of the apartments are concerned about the increased traffic and difficulties getting in and out. They're worried about undesirable people hanging out in the parking lot, especially after the day center closes, possibly harassing them and their children, and committing crimes. They also worry that the homeless could endanger their children on their way to or from the nearby Davis Elementary school. Unfortunately, this has already happened.

The local residents started a petition to argue against locating the center at Cook Plaza[15]. You can read an article about the Cook Plaza plan and the petition in the Gresham Outlook[16]. Please read the petition, as it explains the viewpoint of the residents and their frustration with JOHS.

Conclusion

I attended two meetings about this project, read documents and emails, and still feel that the assurances we've been given are devoid of practicality and our concerns have been dismissed. Essentially, I felt that JOHS was telling us, trust us. However, for all

the reasons explained in this article, the location of a homeless center on the Cook Plaza property is a bad idea. It would be much better to locate a homeless center, especially a day center, in the former Multnomah County Sheriff's building at NE Glisan and NE 122nd Avenue. Although that building was a homeless shelter previously, it was not well managed and consequently failed. If JOHS is confident that service providers can manage a day center, they should try it there – it's right in the middle of an area where so many homeless people actually hang out. Gresham may have more homeless issues to deal with in the future, and we don't need to have unnecessary problems unloaded on our community.

Visit www.wilkeseastna.org/node/3725 to view article End Notes ■

Wilkes East Neighborhood Association
Annual Election of Officers
Monday November 18th 7pm
Moose Lodge • 16411 NE Halsey
 To join the Board, simply show up and **nominate yourself!**



Freeze the Grease, Save a Bundle

Pour leftover gravy, pan drippings and sauces into a can, freeze it, and toss the can into the trash.

Peace, Joy & Happiness

Wishing you a Happy Thanksgiving, Joyous Holidays, and a New Year filled with success.

This holiday season take the time to give thanks for all that's good in your own life -- and to give to others who may not share the same good fortune.

Have a safe and happy Holiday Season

Save the Date!
Wilkes East Neighborhood
Fall 2024 Meeting
Monday, November 18th, 7PM
Moose Lodge • 16411 NE Halsey

- WENA Board Elections
- Cook Plaza Homeless Center
- Habitat for Humanity
- Spring Cleanup Volunteers Needed
- Neighborhood news and more!

See you there!

Are you signed up?
 Nextdoor.com is the social networking service for neighbors to connect with each other. Sign-up today!