



Wilkes East Residents Add to Neighborhood Livability through Walking

By Sarah Jacobson

Wilkes East resident and Board Member

One of the many aspects adding to the vibrancy of the Wilkes East neighborhood is the multitude of walkers. You see them all day-exercisers, dog walkers, baby walkers, students heading to H.B. Lee or Wilkes Elementary; people walking with friends, neighbors, or solo; neighbors walking to stores and parks. Not only is walking great for your physical and mental health, it also contributes to a healthy neighborhood. Pedestrian traffic allows for increased neighborhood connection, improves neighborhood safety via the "eyes on the street" principle, and where it replaces a car trip walking also reduces pollution. Neighborhood walkability directly impacts livability.

Here are a couple ways to encourage walking in our neighborhood:

1. Greet neighbors out walking. A smile, wave, or quick hello provides a dopamine boost!



Wilkes East residents Jeff, Sandra & Nora. Favorite walking destination: Columbia View & Nadaka; to visit neighbors for coffee & conversation; Columbia View Park respectively

2. Keep sidewalks in front of your residence clear of debris and trim low hanging tree branches. Avoid parking across sidewalks or blocking ADA ramps and crosswalks.

3. Slow down when driving & be sure to stop at crosswalks.

4. Advocate for sidewalk improvement projects like the one proposed for 162nd Ave. which is currently seeking Metro funding (www.oregonmetro.gov)

WALKING (Page 3)

Summer 2022 Weather Outlook, Will we see record breaking temperatures?



By Wilkes East Meteorologist Garret Hartung

After the record-breaking heat and drought we saw last summer, many around the

Pacific Northwest are relieved at the cooler weather we've seen so far this summer. Looking at a couple observations from the Portland Airport through July 4th, the contrast between the two years could not be clearer:

Number of days with high temperatures at or above 80F: 32 in 2021, 7 in 2022

Rainfall through July 4th: 14.5 inches in 2021, 23.34 inches in 2022

This cooler and wetter pattern is due to a persistent upper-level trough that's been hanging out off the coast of British Columbia. This area of cooler, more dense air in that position, pushes the cooler marine air inland especially when there is strong heating in the Columbia River Basin.

Even though the occasional rainfall has been ruining outdoor plans, overall it's had a very positive affect on the Northwest. Drought conditions west of the Cascades have improved, snow melt has been delayed which keeps energy prices low and pushes back the fire season. However, there is still plenty of time for that to change this summer.

Historically, late July through early September is our hottest and driest period of the year. It's likely we will see at least a couple more shots of hot temperatures.

WEATHER (Page 4)

Did you know? Gresham has 26 parks and 8.39 miles of trails.

INSIDE THIS ISSUE

- Adding Livability through Walking
- Summer 2022 Weather Outlook
- Meet Gresham's New Police Chief
- New Bike Route In Wilkes East
- Citizen Volunteers in Policing



Wilkes East Land-Use Update

By Greg Hartung,

Board Member, Land-use Chair

Hello members of our Wilkes East Neighborhood Association.

The Wilkes East Neighborhood Association board regularly receives land use plans from the City of Gresham to notify us of land use projects within or proximity to the Wilkes East neighborhood boundaries. Here are some recent notifications WENA has received.

Plan Case [LF-22-00327](#)

Application date 5/11/2022.

Location: 17979 NE Glisan St, Gresham Or, 97230 (Former Walgreens Location). [Sunrise Center](#) is contemplating leasing this empty store, and then using it for offices and small events. New exterior signage will be erected in conformance with Community Corridor district standards. No change to the exterior doors, windows, parking lot, driveways or pedestrian access will be made. Interior modifications will outfit space for offices and gatherings. Installation of a catering kitchen that supports serving of food that was prepared off-site. The Event Space will seat fewer than 300 people, and be used for parties, corporate events, after-school programming, and community gatherings of various kinds.

LAND-USE (Page 3)

Mark Your Calendar!

Wilkes East Neighborhood

Summer Meeting
August 8th • 7PM

Columbia View Park,
1000 NE 169th Ave, Gresham

Wilkes East Neighborhood Association Newsletter

Published three times a year. Over 1500 copies distributed throughout Wilkes East.

The Wilkes East Neighborhood Association (WENA) is a non-profit organization in Gresham, Oregon. Deadline for submission is the 10th of the month prior to publication. WENA reserves all rights, and all copy may be edited for clarity and length. Download a PDF of this newsletter online at: wilkeeastna.org/newsletter.htm.

BOARD MEMBERS

Chair Kris Freiermuth
chair@wilkeeastna.org
Vice Chair (Vacant)
vicechair@wilkeeastna.org
Secretary Gail Voge
secretary@wilkeeastna.org
Treasurer Billy Simmons
treasurer@wilkeeastna.org
Land Use Greg Hartung
Kris Freiermuth
landuse@wilkeeastna.org
At-Large Sarah Jacobson
member2@wilkeeastna.org
Bob Lundbom
webmaster@wilkeeastna.org
Erica Porras
member1@wilkeeastna.org
Dimitrios Zourkos
member3@wilkeeastna.org

BOARD MEETINGS

Meetings are held on the second Monday of each month at 6:30PM. See wilkeeastna.org for details.

CONTACT US

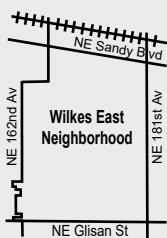
Email: info@wilkeeastna.org
Postal Mail: 17104 NE Oregon, Portland OR 97230

VOLUNTEER OPPORTUNITIES

Get involved. Let us know how you'd like to help.
Email info@wilkeeastna.org for details.

SPECIAL THANKS

- The newsletter is funded in part through a generous grant from the City of Gresham.
- Printing by Print Results Inc. 503-287-9566



info@rideconnection.org

Ride
CONNECTION

503.226.0700

Providing responsive, accessible transportation at no cost for seniors and people with disabilities
www.rideconnection.org

wilkeeastna.org

Dear Neighbors • a message from your WENA President

Hi all! I hope everyone is enjoying our beautiful summer weather!

As a reminder, if you see anyone camping in our open areas or parks please report it to Kevin Dahlgren at 971-978-8112. Kevin is the Health Services Advisor for the City of Gresham. He can help homeless individuals find needed shelter and services.

If you're having an issue with abandoned vehicles, illegally parked cars or commercial trucks, or vehicles blocking fire hydrants or line of sight you can report it to *MyGresham* online at <https://greshamoregon.gov/mygresham/> or download the *free MyGresham* app from Google Play or the Apple App Store. *MyGresham* can help solve many issues.

Be sure to check out Greg Hartung's update on ongoing land-use projects in our neighborhood. Sarah Jacobson presents an interesting article on "walkers in our neighborhood". And our Wilkes East Meteorologist Garret Hartung gives us his Summer 2022 weather outlook.

Board member Sarah Jacobson who's been a great help over the past several years is leaving the Board. Thank you Sarah for all your thoughtful input!

Our Summer meeting August 8th, 7 p.m. will be an *'Evening in the Park'* at Columbia View Park, 1000 NE 169th Ave (next to H.B. Lee Middle School) on the west lawn. We are doing this with the assistance of Tina Osterink, City of Gresham Natural Resources Planner & her team. Confirmed speakers include: Police Chief Travis Gullberg; Jay Higgins on the new Gresham Greenways; Michael Elston from North Gresham NA with news about Kirk Park & its official opening; Tina Osterink will bring us up to date on park projects.

As a reminder, all meetings held by the Wilkes East Neighborhood Association are open to the public. Board meetings are held the 2nd Monday of each month (excluding December). There are three (3) General Meetings held the 2nd Monday of March, August, and November. We would like very much to see or hear from you!

Visit our website at www.wilkeeastna.org or find us on Facebook at Wilkes East Neighborhood Association.

See you at the park August 8th!
Your Neighbor,

Kristen Freiermuth

Meet Gresham Police Chief Gullberg



Gresham Chief of Police Travis Gullberg

Travis Gullberg has served the Multnomah County Oregon Sheriff's Office (MCSO) since 1998. He retired from the agency as the Captain of the Community Partnership Unit and designated Chief of Police for the Transit Police Division.

He began his 25-year law enforcement agency career as a Police Officer with the City of Rock Springs, Wyoming, in 1996. Gullberg received his Bachelor of Science in Sociology and Social Work degree from Warner Pacific College and has a Graduate Certificate in Criminal Justice Education from the University of Virginia. He is also a graduate of the FBI National Academy, and is currently pursuing a Master's Degree in Public Safety from the University of Virginia.

Travis' MCSO career assignments include, Designated Chief of Troutdale, Patrol

Operations Captain, Captain of Professional Standards, and Lieutenant of River Patrol, Dive Team, Search and Rescue, Detectives, Public Information Officer, Field Training Officer and Civil Process Unit.

"My roots are here in Gresham, and I'm thrilled to be able to join the Gresham Police Department," said Gullberg. "I have the utmost respect for Gresham officers. Together, I'm confident we will move forward and meet the call to serve this community."

Chief Gullberg started work at the City of Gresham on August 30, 2021. ■

Attention Neighbors

The Wilkes East Neighborhood Association would like to remind our neighborhood that all neighbors are welcome to attend board meetings, and are strongly encouraged to attend our general meetings held 3 times each year. Our next general meeting will be held at Columbia View Park (south of HB Lee school).

In order for our community and neighborhood to thrive, we need participation and input from all individuals living in Wilkes East. Your voices, opinions, and concerns matter. ■

Get involved! Start a Neighborhood Watch in your area. Visit
greshamoregon.gov/Neighborhood-Ready



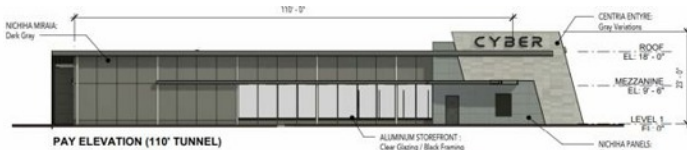
Summer 2022

LAND-USE (Page 1)

Plan case [PRE-22-00376](#)

Application Date 5/31/2022

Location: 2777-2789 NE 181st Ave, Gresham Or 97230. The proposed Cyberwash car wash building will include a 110-foot-long tunnel design, overall dimensions 127 feet long by 48 feet wide, total building gross square footage 5000 sq. ft.



Site access will be from NE 181st Ave, and two other points of access via private drives along the north and west property lines, leading to 3 pay lanes along the north, tunnel entry at the west end of the property. The property will have a shared access driveway with the adjacent developed commercial establishments. The car wash building will house standard wash bay and drying areas, mechanical support spaces, storage areas, employee customer service and support areas including restroom facilities and employee-only work area. 2-3 employees are to be expected to work standard business hours 8-am to 7 pm.

Plan Case [DR-21-00616](#)

Applied date 11/05/2021

Phase 1 of new construction of approximately 26,000 square foot pre-engineered metal building for Pape Machinery's new Ditch Witch facility located at 17217 NE Sandy Blvd.



This is on the 11-acre property adjacent to the historical Zimmerman House. Due to site constraints all regulated trees are proposed to be removed. The Gresham Wetland report indicates no wetlands on this property. Phase 2 will include a second Pape Machinery facility. These plans and other public information can be viewed on Gresham Online Services portal (<https://gresham-energovweb.tylerhost.net/apps/SelfService#/search>) where applicants can electronically submit Plan or Permit applications quickly and easily, and where interested parties searching for public records can search for project data or access the City's map service.

For public records requests for files processed between July 2017 and December 31, 2020, please continue to access ePlan or contact the Planner on Duty at POD@GreshamOregon.gov. For public records requests for files processed prior to July 2017, please contact the Planner on Duty at POD@GreshamOregon.gov. If you have any questions about using Gresham Online Services, please contact PlanningTech@GreshamOregon.gov. More information on these land use projects can be obtained by calling 503-618-2845 to speak with a submission's coordinator or email the planner on duty at pod@GreshamOregon.gov. ■

Thank you!

To the many individuals that pick up litter while walking or jogging in our neighborhood. Wilkes East Neighborhood Association would like to acknowledge you and extend a very special "Thank you!"

wilkeseastna.org

WALKING (Page 1)

5. Join the club! Seeing walkers encourages others to take a walk too. Invite a family member or neighbor.
6. Support businesses within walking distance.

Meet some Wilkes East walkers!

Residents Eleanor, Alice & Evelyn visiting Columbia View Park. Favorite walking destination: Anywhere; the H.B. Lee track; and Wilkes Elementary playground respectively



Residents Mary, Dave & Ringo Starr. Favorite destination: Nadaka to Pat Pfeiffer

Citizen Volunteers in Policing (CVIPS)

Citizens making a positive difference in our community

About the CVIP program

Gresham's Citizen Volunteers in Policing (CVIP) are the *eyes and ears* of the Police Department and create a visible presence in our parks, trails, residential areas and commerce centers.

The CVIP program is currently accepting applications online (<https://greshamoregon.gov/WorkArea/DownloadAsset.aspx?id=5063>), mailed or dropped off or at the Police Records Department, **1333 NE Eastman Parkway, Gresham Oregon 97030**, Attn: Lt. Jeff Miller.

Volunteers do not carry weapons, confront suspects, or participate in altercations; they observe and report.

In addition, CVIPs:

- Deliver food boxes.
- Participate in community events.
- Report graffiti.
- Patrol along City trails using a Gator mobile.
- Issue handicapped parking citations.
- Deploy the speed radar trailer.
- Assist with curfew sweeps.
- Initiate patrols of residential areas, parks, school grounds and commercial areas.

Volunteer criteria

- Must be 21 years of age and older
- Must live or own a business within the city limits of Gresham
- Must pass a DMV and criminal background check

In addition, an appointment to the program requires attendance at an orientation meeting, followed by an interview with the City's Chief of Police.

More information

If you have questions about the CVIP program please contact Sgt. Mike Amend at 503-618-2894 or Michael.Amend@GreshamOregon.gov.

New Bicycle Route – Coming to NE Pacific Street and NE 172nd Avenue

By Jay Higgins
Associate Transportation Planner
City of Gresham

During development of [Gresham's Active Transportation Plan](https://greshamoregon.gov/WorkArea/DownloadAsset.aspx?id=6876) (https://greshamoregon.gov/WorkArea/DownloadAsset.aspx?id=6876) in 2017, many community members said they would use active transportation more if they felt safe from vehicle traffic. In order to meet the need for safer bike infrastructure, the City's Active Transportation Plan created a network of low-traffic streets that connect to everyday destinations.

The City is installing a new bicycle route on NE Pacific Street and NE 172nd Avenue this summer. These new bicycle routes are called Gresham Greenways and they are an easy way to get around without using a vehicle for trips to everyday destinations. Gresham Greenways are local low-traffic streets that connect to parks, schools, commercial areas, and existing bicycle routes. The new Gresham Greenway on NE Pacific Street and NE 172nd Avenue connects to Nadaka Park, Pat Pfeifer Park, H.B. Lee Middle School and east to Kirk Park.



Gresham Greenways have new bicycle treatments to make the route safer. On NE Pacific Street signage and new street markings will remind vehicles and bicycles to share the road. On NE 172nd Avenue, between NE Glisan Street and E Burnside Street, bicycle lanes will be installed to reduce the perceived width of the street to help calm traffic. A new crossing will be installed on NE 181st Avenue at NE Pacific Street with a rapid flash beacon to alert vehicles that pedestrians and bicyclists are waiting to cross.

Gresham Transportation Planner Jay Higgins will be discussing the bicycle route in more detail at the August 8, 2022 Wilkes East meeting. ■

WEATHER (Page 1)

Even if we fail to hit the upper 90's again, only a couple weeks of little to no precipitation is all it takes for the nice and green foliage we have now to turn into wildfire fuel. While it is highly unlikely, we will see a repeat of the 2020 Labor Day fires (we'd need ongoing fires along with a strong east wind event for that to happen), some smoke and hot temperatures will probably make an appearance before the summer is over. Its best to prepare for these things while the air is clear.

Some things you can do to prepare for wildfire smoke is replace your HVAC filters and have a supply of N95 masks on hand in case the air quality become hazardous. Should wildfire smoke drift into the area is best to limit time spent outdoors if possible. If extreme heat comes back into the forecast, it's best to stay in cool indoor areas, hydrate, and check in on those more susceptible to the heat. Especially if they are living independently. ■

Did You Know? Gresham's city library, which began as a small book collection in the town's general store, was officially established as the Gresham Branch Public Library in 1913 with a grant from the Andrew Carnegie library fund

2022 Street Sweeping Schedule - Wilkes East

NE 162nd Ave to NE 181st Ave, NE Glisan to NE Sandy Blvd
2nd Monday, March - November

Please move vehicles, boats, campers, garbage cans, basketball hoops and other objects into your driveway.

Mar 14, 2022	Jun 13, 2022	Sep 12, 2022
Apr 11, 2022	Jul 11, 2022	Oct 10, 2022
May 09, 2022	Aug 08, 2022	Nov 14, 2022



Did You Know? Gresham General Hospital opened in 1959 in downtown Gresham at NE 5th & Hood Ave. In 1984, the hospital moved to 248th & Stark St and became Mount Hood Medical Center.

Did You Know? Prior to the arrival of early pioneer settlers, the Clackamas tribe of the Chinookan peoples built their plank-house villages next to the various creeks and rivers within Gresham.

Save the Date!

**Wilkes East Neighborhood
Summer 2022 Meeting
Monday, August 8th, 7-9PM**

**Columbia View Park
1000 NE 169th Ave
(Next to HB Lee Middle School parking lot)**

- Gresham Police Chief Gullberg
- Tina Osterink, Gresham Parks
- Jay Higgins, Gresham Greenways

See you at the Park!

Are you signed up?
Nextdoor.com is the social networking service for neighbors to connect with each other. Sign-up today!

