



Walgreens Pharmacy at 162nd & Glisan Proposes Relocating to a New \$1.3M Store at 179th & Glisan

Unique neighborhood design features large windows and tall entrance

The Walgreens pharmacy at 162nd & NE Glisan has filed plans with the City of Gresham to build a new \$1.3 million store at 179th & NE Glisan, relocating their business operations across from Albertsons.



Proposed \$1.3M Walgreens at 179th & NE Glisan St. Completion in 2015

The proposed development calls for the removal of all existing buildings (approximately 11,800-sf) on the site and construction of a new 15,000-sf one-story retail pharmacy store with 50 parking spaces.

The new brick, stucco and glass building features a unique neighborhood design that incorporates large windows offering a view into the store and a tall entrance on the southeast corner. The project also includes a covered bus shelter, 8' sidewalk and 8' planting strip, bike parking, lots of new trees, rain gardens and plenty of lighting.

The site is located on the north side of NE Glisan Street just west of NE 181st

Avenue, but does not include the property on the northwest corner currently occupied by Jiffy Lube.

The 1.54-acre site has three existing single-story buildings: 543 NE 181st Avenue (used tires store), 17941 NE Glisan Street (convenience store) and 17925 NE Glisan Street (dance studio). Visit wilkeeastna.org/node/1544 for project details and City website links. ■

GET OUR FULL COLOR NEWSLETTER
Download a full color PDF of this newsletter with [active web links](#) by visiting our website at www.wilkeeastna.org/newsletter.htm ■

Community Celebrates Nadaka Groundbreaking Ceremony



By Lee Dayfield

It was a lovely evening on July 9th for the official groundbreaking ceremony on the two acre parcel at the south edge of Nadaka. This is the future site of the community garden, nature based play area, picnic shelter and restroom.

The ceremony was officiated by [Carla Piluso](#) with the following guest speakers: [Mayor Shane Bemis](#); [Metro Councilor Shirley Craddick](#); Gladys Ruiz, [Audubon](#)

[Society of Portland](#); Bob Sallinger, Board Member of [East Multnomah Soil & Water Conservation District](#); Mother Jamie Sanders, [St. Aidan's Episcopal Church](#); Lee Dayfield, [Friends of Nadaka](#) and Adam Kohl, [Outgrowing Hunger](#).

T.A. Nelson's family members who previously owned this two acre parcel were also on-hand to celebrate the event.

After the groundbreaking which was done on the community garden site there was a tour of Nadaka for staff and Board members of [East Multnomah Soil & Water Conservation District](#) and others.

See **PARK** Page 3

Mark Your Calendar!
Wilkes East Neighborhood

Summer Meeting
August 25th • 7PM

St Aidan's Church
174th & NE Glisan

INSIDE THIS ISSUE

- Walgreens Pharmacy Relocating
- Reynolds HS Gym Renovation
- Nadaka Groundbreaking Ceremony
- 10 Simply Ways to Save Water
- A Tale of Two Wilkes Neighborhoods
- Nadaka Nature Park/Garden Project

Reynolds School District Announces Plans for RHS Gym Complex Renovation



[Reynolds School District](#) is moving forward with plans to fully renovate the finishes in the Reynolds High School Gym complex including locker rooms, public restrooms and lobby areas. The expanded project has been made possible with generous support from [Oh Planning & Design Architecture](#) and local firms who have donated funds, materials, and labor. The expanded renovations were approved after the shooting which occurred within the gymnasium complex on June 10, 2014.

Portland architecture firm Oh Planning & Design Architecture was in the process of designing improvements to the locker rooms at Reynolds High School when the shooting occurred. School district officials approached Oh Planning and Design to discuss what more could be done to repair the athletics wing before students returned to school. Superintendent Linda Florence said, "The district found Deb France, Oh's Founding Principal and lead architect, a willing partner in working to create a space that would support students when they return in the fall.

The gym complex serves the entire community and we wanted the gym complex to be a place that welcomes and honors the important work that takes place there. It will provides opportunities for the community to heal and recover from the events of June 10."

See **REYNOLDS** Page 2

Wilkes East Neighborhood Association Newsletter

Published quarterly. Over 1500 copies distributed throughout Wilkes East.

The Wilkes East Neighborhood Association (WENA) is a non-profit organization in Gresham, Oregon. Deadline for submission is the 10th of the month prior to publication. Submit material to info@wilkeeastna.org. WENA reserves all rights, and all copy may be edited for clarity and length. PDF of this newsletter with active links online at: www.wilkeeastna.org/newsletter.htm.

EXECUTIVE BOARD

- President** **Kris Freiermuth**
krisfreiermuth@wilkeeastna.org
- Vice President** **Marc Thornsbury**
marcthornsbury@wilkeeastna.org
- Secretary** **Greg Hartung**
secretary@wilkeeastna.org
- Treasurer** **Billy Simmons**
treasurer@wilkeeastna.org
- Land Use Chair** **Curt Duval**
landuse@wilkeeastna.org
- Members-at-Large** **Bob Lundbom**
webmaster@wilkeeastna.org
- Juanita Null**
member2@wilkeeastna.org

BOARD MEETINGS

Board meetings are held on the fourth Monday of each month at 6:30PM. See [website](#) for details.

SPECIAL THANKS

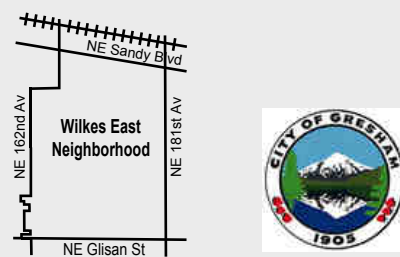
- The Wilkes East Neighborhood newsletter is funded, in part, through a generous grant from the [City of Gresham](#).
- Printing by [Print Results Inc.](#) 503-287-9566
- Meeting hall: [St Aidan's Episcopal Church](#)

Got an interesting story to share?

Email it to: info@wilkeeastna.org, or mail to: PO Box 536 • Fairview, OR 97024

Volunteer Opportunities

Get involved. Let us know how you'd like to help. Email info@wilkeeastna.org for details.



Dear Neighbors • a message from your WENA President

Mark your calendar with these dates:

•Monday August 25th. WENA's Summer Public Meeting, 7PM at St Aidan's Episcopal Church, 17405 & NE Glisan. Topics: Powell-Division Transit Project, Habitat for Humanity 165th & Glisan Project, City of Gresham Transportation.

•Saturday September 27th. Nadaka Community Festival. This year's festival is being moved to September to accommodate the community garden preparation & other work on the park properties. Check our website www.wilkeeastna.org for details about this family-fun community festival.

We ran into a wall of red tape!

The Reynolds School District notified us at the last minute that a liability insurance policy would be required to use the HB Lee Middle School parking lot for the Neighborhood Clean Up scheduled June 28th. We know many of you were disappointed that we weren't able to hold this important fundraiser. We're hoping to find a new location to have future Neighborhood Clean Up's. We'll keep you posted!

Two personal safety issues have come to our attention:

•First, your mailbox! A family with children was recently seen walking through the neighborhood opening mail boxes. The children walk ahead of the adults opening the

mailbox, then the adults look inside the box they as walk by.

•Next, your garbage & recycle carts! Strangers have been regularly observed rummaging through neighbor's carts before the trash collector can haul it away. Mostly, these strangers are looking for soda cans and water bottles. But some have been seen collecting envelopes, papers and other items. Don't become a victim of identify theft. Always shred discarded items that contain any personal information.

And a reminder, if you don't have a neighborhood watch group we encourage you to consider forming one. It's an excellent way to get to know your neighbors plus it sends a message to criminals that you're watching them. Let us know if you need assistance!

Last, I'd like to take this opportunity to thank those neighbors who volunteer to serve our neighborhood association as well as everyone who takes timeout to read our newsletter.

Be sure to check the Wilkes East Neighborhood website for events and news. Visit www.wilkeeastna.org.

I'll see you around the neighborhood!

Your Friend & Neighbor,

Kristen Freiermuth

REYNOLDS (Page 1)

Deb France connected with her network of building material suppliers, vendors and contractors, as well as local business leaders, immediately securing monetary and in-kind donations. "There was an opportunity for us to make changes that would transform the place where students come to train and condition their bodies. We wanted students to return to a place of hope and vision so they can move beyond any fears they may have," says Deb. "Since we were already in the midst of the locker room improvement project, we started contacting local materials suppliers and business community to get support for making significant cosmetic improvements in the entry, lobby, hallways and restrooms. The response so far has been overwhelming and immediate."

Donations have been received from Hunter Douglas, Armstrong Flooring, Interface, Miller Paint, Beynon Sports, Viridian Wood, InPro Corp., 9Wood, EB Bradley, Daltile, and Lumicor so far.

The renovation now includes new finishes and furnishings for the public restroom and locker room. A rear hallway that sheltered students will be renovated and the lobby transformed. New security doors, trophy cases, floors and ceilings in the entry lobby will celebrate athletic achievements of students past and present. ■

Did You Know? Gresham was named in May 1884 for the American Civil War general, and Postmaster General, Walter Quinton Gresham.

Did you know?

August 2014 has 5 Fridays, 5 Saturdays and 5 Sundays! This occurs only once every 823 yrs.

August 2014						
Sun	Mon	Tue	Wed	Thu	Fri	Sat
					1	2
3	4	5	6	7	8	9
10	11	12	13	14	15	16
17	18	19	20	21	22	23
24	25	26	27	28	29	30
31						

info@rideconnection.org



503.226.0700

Providing responsive, accessible transportation for seniors and people with disabilities at no cost

www.rideconnection.org

PARK (Page 1)

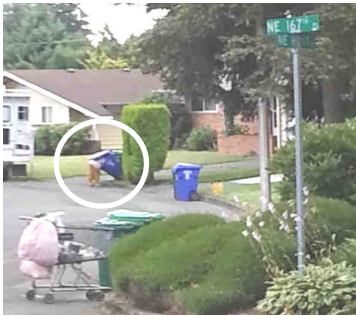
Cupcakes, lemonade and bubbles were available for everyone to enjoy.

Between 75 and 80 people attended the event including [Gresham City Council members](#), Jane VanDyke, Executive Director of [Columbia Slough Watershed Council](#); Steve Fancher, [Director of Environmental Services](#); Todd Jones, [Gresham Parks](#) staff; Mike Green, [Gresham Project Planner](#); Rod Park, past Metro Councilor; Owen Wozniak, [Trust for Public Lands](#); Jean DeMaster, Executive Director of [Human Solutions](#); [MIG, Inc](#) staff that designed the project; and many many others who have given of their time to make the Nadaka Nature Park & Garden Project possible.

See the Wilkes East website calendar for Nadaka events, and visit friendsofnadaka.org for Nadaka Nature Park news. ■

Did You Know? *The average American residence uses about 100 gallons of water per day*

How Safe Is Your Identity? Are you positive?



One Man's Trash Is Another Man's Treasure

Recently we've received several reports of strangers rummaging through resident's garbage cans before the trash collector can haul it away.

Usually this activity occurs after dark. But as this photo shows, it's much easier to search when it's daylight.

The 'dumpster diver' pictured above (inside the circle) has been observed for several weeks this summer entering neighbors back yards in search of treasure or anything else of value.

Don't become the next victim of identify theft. Always shred unwanted mail containing your name, address, or account information. Remove mailing labels from discarded magazines and parcel packages. And always remove the labels from empty prescription bottles. ■

Big Screen On The Green
Presents Disney's
FROZEN

Free Admission
Saturday Aug 23
PG-13 • 7PM

Bring a blanket & chair

Glendoveer Golf & Tennis
14015 NE Glisan St

Waterwise Gardening: 10 Simple Ways to Save Water and Money this Summer



Landscapes add value, beauty and livability to our homes. With water use often doubling in the dry summer months due to outdoor watering, lawns and gardens also offer great potential to save time, money and water by making simple waterwise improvements.

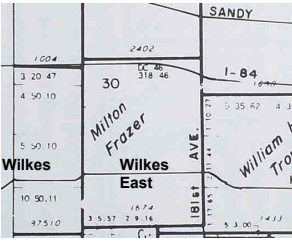
In the Portland area, we receive 90 percent of our rainfall October through May. That means we use the most water during the very same months that we get the least rain. Being efficient with your water use makes sound economic and environmental sense, and helps our region meet its long-term water supply needs.

Waterwise gardening doesn't have to look like a typical southwest cactus and rock landscape. Rather, waterwise gardening practices that incorporate efficient watering tips can create beautiful landscapes that are multi-colored, vibrant and bountiful, even during the hottest summer days.

The Regional Water Providers Consortium—a group of 20+ local water providers and Metro—offers Wilkes East residents the following 10 tips for creating and maintaining waterwise landscapes.

1. Adjust your sprinklers to water your lawn and garden, not the street or sidewalk.
2. Water early in the morning (before 10 a.m.) or later in the evening (after 6 p.m.) when temperatures are cooler and evaporation is minimized.
3. Water established lawns about one inch per week. Use a watering gauge or tuna can, along with a timer, to determine how long it takes your sprinkler to water one inch.
4. Set it, but don't forget it! Whether you have a manual sprinkler or an automatic system, adjust your watering throughout the summer to meet the needs of different plants and lawns. Check out the Weekly Watering Number at www.conserveh2o.org to see how much to water your plants and lawn each week.
5. Inspect your overall sprinkler system for leaks, broken lines or blockage in the lines. A well-maintained system will save you money, water and time, as even small leaks can waste hundreds of gallons of water each month.
6. Consider replacing some turf area with low-water plants and ornamental grasses. They are easier to maintain than turf, look beautiful and require far less water. Visit www.conserveh2o.org to download a free water-efficient plant guide.
7. Group plants with similar watering needs. Creating "watering zones" in your garden will allow you to give each plant the water it requires—not too much or too little.
8. Add a shut-off nozzle to your garden hose and save about five to seven gallons each minute your hose is on.
9. Adjust your mower to a higher setting. A taller lawn provides shade to the roots and helps retain soil moisture, so your lawn requires less water.
10. Apply only the amount of water your soil can absorb. Water thoroughly, but infrequently. If runoff or puddling occurs, reduce longer watering sessions into several short sessions. This will allow for water to more efficiently soak into the soil between each watering session.

For more tips to help you save water and money this summer, visit the Regional Water Providers Consortium at www.conserveh2o.org. ■



The Tale of Two Wilkes Neighborhoods

Local history says in the summer of 1845 Payton & Anna Wilkes and their seven children left Independence Missouri in a two-yolk oxen-drawn covered wagon and headed west on the Oregon Trail for Oregon.

They arrived by late fall after crossing the Cascade mountains during a particularly strong snow storm and settled into their new life style in Oregon City. More than 3,000 wagons arrived in Oregon that year.

In 1850 their son William Wilkes took a Donation Land Claim on Sandy Road east of Portland.

The Donation Land Claim Act (DLC) became law on September 27, 1850 as a means to promote homestead settlements in the Oregon Territory (comprising the present-day states of Oregon, Washington, Idaho and part of Wyoming). The Act granted 320 acres of designated areas free-of-charge to every unmarried male citizen eighteen or older, and 640 acres to every married couple arriving in the Oregon Territory before December 1, 1850. A total of 7,437 land claims were issued under the Act which expired in late 1855.

Soon after receiving his land, William gave up his claim after his wife died and headed to California to mine gold.

Rich with cash, William Wilkes returned to east Portland and purchased the Milton Frazer DLC (see photo above), which was located immediately to the east of his original claim.

And that's why there are two Wilkes neighborhoods. Wilkes, the original land claim. And, Wilkes East, the purchased land to the east of William Wilkes original claim.

To learn more about local history, read "Gresham, Stories of our Past". Available from the [Gresham Historical Society](#) and at area book stores. ■

Nadaka Nature Park & Garden Project Update

By Lee Dayfield, Friends of Nadaka

2014 promises to be another amazing year at Nadaka. Work will soon begin on the two acre site east of St. Aidan's Church at NE 175th and NE Glisan. There will be a nature based play area for children, a large community garden, rest-rooms and covered picnic shelter.

The community garden should be ready for planting in the Spring of 2015 but there may be a cover crop planted over the winter this year. Individual garden plots and ADA-accessible raised beds will be available. This is a community-operated garden! In addition to your plot there will be tools, storage shed, water, compost, discounted seeds and small fruit. For garden fee call Adam at [Outgrowing Hunger](#) at 971-231-4191.

[Mount Hood Community College SEED](#) students did three projects at Nadaka this Spring: Vegetation Study, Trail Decommission & Survey and Community Garden Composting System Proposal. A presentation was made about each project on June 9th at MHCC by the SEED students.

So far this year there have been 300 volunteers working at Nadaka for a total of 762 volunteer hours. [HB Lee Middle School SUN](#) students have been removing invasives, learning about native plants and just having fun at Nadaka. Scout Troop 606, [SOLVE](#), [Corbett Charter School](#), [Portland Adventist Academy](#), [Oliver Elementary School](#), and [Four Cities Peer Court](#) are among the groups participating at Nadaka.



On April 12th there was a Walk & Talk Tour at Nadaka. Visitors learned about native, invasive, and edible plants and Candace Green (left) talked about her days being a Camp Fire Girl at Nadaka.

This Spring the City removed six Douglas firs that were infected with laminated root rot. Some of these logs will be used in the nature based play area or they will be exchanged to cover some of the costs for other play structures that require cedar. Play structures will be built by Bob Michaud-Tradd, [belkorlogworks.com](#) and by employees of [Verde](#). Verde along with community volunteers will help build the community garden and do the plantings of edible berries and other native plants. At least one of the sheds in the community garden will be built by [Oregon Tradeswomen](#).

Upcoming Nadaka Events

- Sat, Aug 23, 10am to 2pm **Cleanup**
- Sat Sep 13, 10am to 1pm **Cleanup**
- Sat Sep 27, 9am to Noon **Cleanup**
Noon to 3pm **Nadaka Community Festival**

For Nadaka updates visit [friendsofnadaka.org](#), check out Friends of Nadaka on [Facebook](#), visit [wilkeseastna.org](#), or contact Lee at 503-998-1044.

Special continued thanks goes out to [Audubon Society of Portland](#), [Columbia Slough Watershed Council](#), [East Multnomah Soil & Water Conservation District](#), [Metro](#), [Outgrowing Hunger](#), [Human Solutions](#), [St. Aidan's Episcopal Church](#), [City of Gresham](#), [MIG](#), Lora Price, our Project Manager, [Eastrose Unitarian Church](#), [HB Lee SUN Program](#), [Wilkes East Neighborhood Association](#), [Mount Hood Community College SEED](#) program, [Verde](#), [Oregon Tradeswomen](#), [Rockwood CDC](#) and the hundreds of volunteers who continue to work on making Nadaka the gem of West Gresham. ■

Nextdoor Have You Signed Up?
 Nextdoor.com is the neighborhood-centric social network for you, your neighbors and your community. It's the easiest way for you and your neighbors to talk online. And it's free! [Sign-up today!](#)

Make A Difference. Become a member-at-large.
[Contact your neighborhood association today!](#)